

## The 2017 7QP Report

Okay, so the conditions were not stellar. Insufficient sunspots, low flux numbers led to much lower activity on 10 and 15m. However, the lower bands were very quiet because there were no electrical storms in the Midwest this year. There was lots of activity on the low bands. 40m and 80m were HOT.

Band	CW	PH	Dig
160	205	9	0
80	8882	3844	1
40	22118	11716	261
20	40130	24965	572
15	1064	53	0
10	0	4	0
VHF	0	19	1
	72399	40610	835

The table shows QSOs made per band and mode, almost 114,000 QSOs. That is up from 90k last year. So the 7QP is growing despite lower sunspots. One could argue that domestic contests enjoy better participation during periods of poorer HF conditions. Many of the larger QSO parties are experiencing higher participation. This may be due to the increased interest in County Hunting, or the

ever-increasing use of computer logging that makes participation so easy. Some of the increase may also be due to the increase in logs submitted – a fatter database.

Participation:	
7th:	1237
RoW:	4729
TTL:	5966
Logs:	712

The 7QP continues to grow. Part of this is due to the cooperation among the 7QP, Indiana, New England, and Delaware QSO Parties that share this first Saturday in May weekend. The other reason is the support from N1MM+ logger and other logging programs that permits a station to participate in all four parties at the same time within the same log. That log can then be sent to all four sponsors without the need to delete non-counting QSOs. This is a mutually beneficial arrangement, and we cannot say enough about the cooperation we receive. Another reason for the popularity of the 7QP is the active support from the clubs and state captains in the eight states of the 7<sup>th</sup> call area. Without these the 7QP would quickly wither.

### Active Counties:

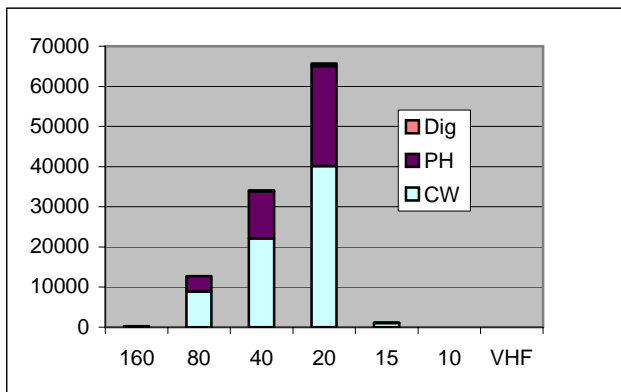
State	#	on	xu	cfm
AZ	15	15	15	15
ID	44	39	38	37
MT	56	31	30	21
NV	17	14	13	13
OR	36	36	36	34
UT	29	23	23	20
WA	39	39	38	33
WY	23	18	16	13
Totals:	259	215	209	186

County activity was very good as shown in the Active Counties table (**xu** is on but excluding-uniques, and **cfm** is a log received). The total county multipliers available this year was four short of the record set last year. A total of eleven mobiles and an amazing 32 County Expeditions helped bring RF to some otherwise barren places. The mobiles were paced by WW7D who activated an amazing 25 counties in Wyoming, Idaho and Oregon

– as a SINGLE OP! He did it by audio recording his log so he could safely operate in motion, and had it typed up and into us well before the deadline.

Speaking of logs, the 712 logs received represents a 17% increase over 2016. As stated before, the increased use of computer logging and the increased use of internet both help. This year there were only three paper logs received and each one of those participants had an email address.

This year we made two significant changes to the rules. First was the addition of an Assisted category, previously covered as multi-single. With well over 200 possible multipliers available, many of the out-of-area stations used this new category to take advantage of spotting assistance, with an associated increase in contacts made by stations within the 7<sup>th</sup> area. In connection to this, APRS location spotting was permitted for all Mobiles. The other change was to create an Open category for County Expeditions which allows an expedition to operate portable from multiple county lines mobile while moving to the next. Yes, that's right – we will do almost anything to encourage people to go out into the boonies and play radios.



	160m	80m	40m	20m	15m	10m
CW	205	8882	22118	40130	1064	0
PH	9	3844	11716	24965	53	4
Dig	0	1	261	572	0	0

**Band Activity** As we said at the beginning, the poorer HF conditions really helped the LF activity. QSOs on 80m were double and 40m was 50% higher than last year. 20m continues to be the most productive band with CW making up over 60% of the total. There were 20 QSOs reported on VHF, mostly 2m FM. Digital activity was down slightly. We would like to promote more digital activity but are unsure of how to do it. Comments on this topic are welcome.

**LOGS** The 7QP uses linux-based scoring software developed by K2DI. It can generate all sorts of reports, do the scoring on logs containing non-counting QSOs, and generates UBN data for use when scores are very close. This year one station slipped from second to third based on one miscopied call. N1MM+ logger leads the way with over 60% share, followed by N3FJP at 20% and WriteLog at 5%. Thirty-two other programs made up the remaining 5%. Thanks to all-time record keeping by K7ZO, the following records were set this year:

W6AFA	Non-7 Single-Op High Phone	W7PX	7th Area Single-County Expedition Multi-Single
K6GHA	Non-7 Single-Op Low Phone	K7UM	7th Area County-Line Expedition Multi-Single
K6LL	7th Area Single-Op High Mixed	N7N	Open Expedition
K7CA	7th Area Single-Op High CW	WW7D	7th Area Mobile Single-Op Low Mixed
WJ9B	7th Area Single-Op Low CW	NA7OM	7th Area Mobile Single-Op Low Phone
N7UVH	7th Area Single-Op Low Digital	N7XU	7th Area Mobile Multi-Single Low CW

**2017 Results** The full Results in detail are on the [www.7qp.org](http://www.7qp.org) website. There you can also see the list of plaque winners, the All-time Records and the Soapbox.

73,  
Dick K4XU